

20 x 7 DOTS

DATA SHEET

- ❖ Two Alpha Numeric Characters.
- ❖ Scrolling Arrows.
- ❖ Binary or Gray Signalization.
- ❖ Active high or Active low inputs.
- ❖ Messages, Scrolling.
- ❖ Buzzer.
- ❖ Field Programmable.

Description

The DISDOT is a Dot Matrix Alpha Numeric Position Indicator for Elevators that can be used to display position, as well as direction, and messages. The display characters and arrow can be configured to be static or scrolling.

The DISDOT can be programmed by the user on site, or in the laboratory, by a hand held programming tool. Many DISDOT units can be programmed simultaneously even when installed in site without disassembling them.

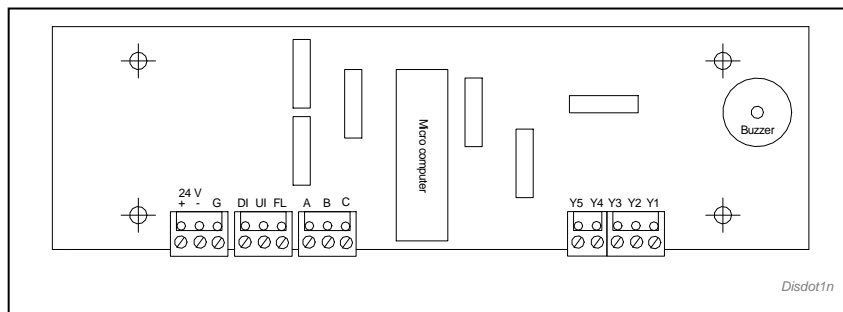
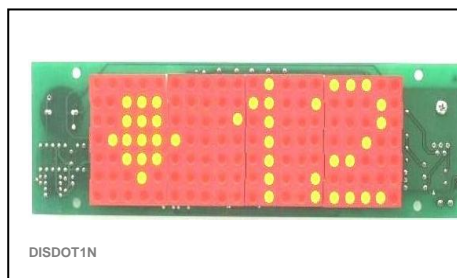
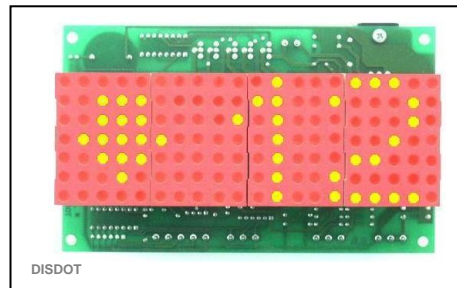
The following scrolling messages are available as standard (See the Table –1):

1. Elevator overloaded.
2. Elevator out of service.
3. Evacuation control.
4. Fire control.
5. Car preference.
6. Maintenance operations.
7. Doors closing.

An on board buzzer is included to sound an audible alarm with desired messages, or act as a passing chime. Dots are red colored.

Wire connection to DISDOT :

- Y1 ... Y5 : Binary or Gray combination for floor display selection.
A,B,C, : Selection of messages, active low.
(See the Table –1)
DI : Down - direction arrow display.
UI : Up - direction arrow display.
FL : Arrow control, active low



Component side view

Display Modes *

Scrolling digits, Static arrow when UI/DI = Active
Scrolling digits, Static arrow when UI/DI = Active and FL = GND.
When both UI and DI = Active no arrow shows (This is lantern mode).
Scrolling digits, Static arrow when UI/DI = Active
Arrow starts scrolling when FL = GND.
Scrolling digits, Scrolling arrow when UI/DI = Active and FL = GND.

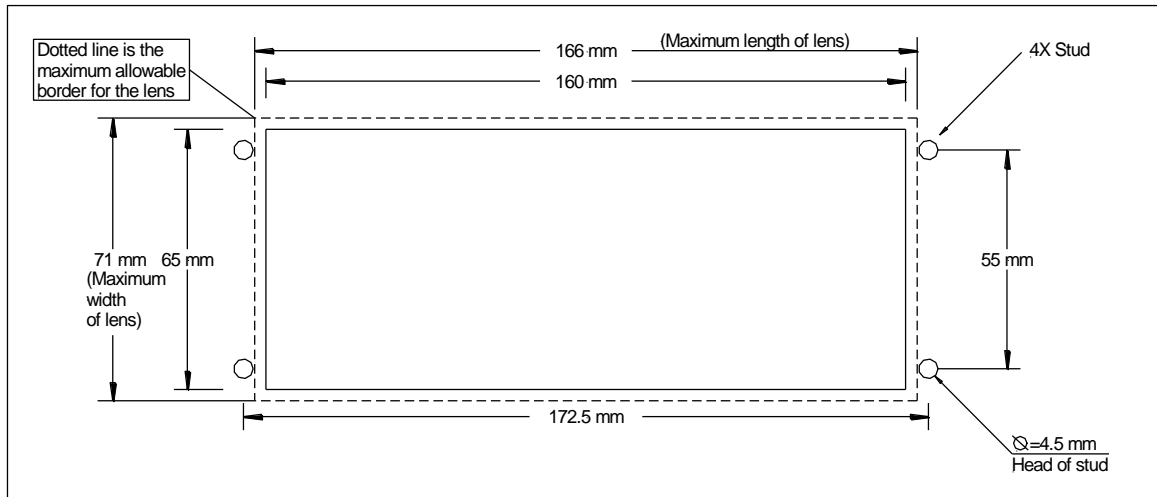
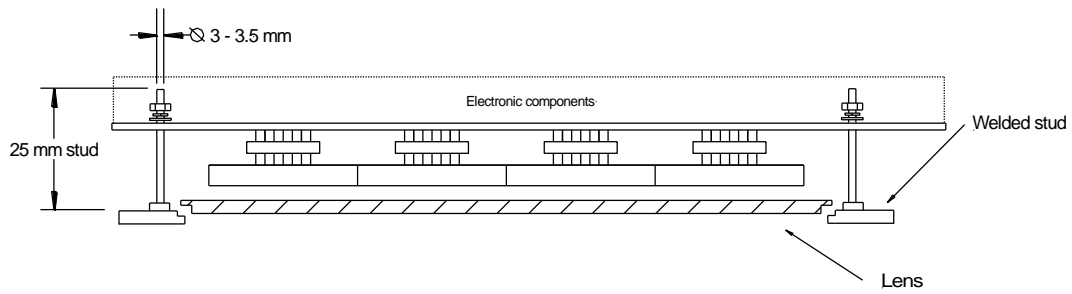
* Modes are programmed by use of hand held tool.

Messages

A	B	C	Description
-	-	-	--
-	-	0	Fire control.
-	0	-	Lift out of service.
0	-	-	Lift overloaded. **
-	0	0	Maintenance operations.
0	-	0	Car preference.
0	0	-	Evacuation control. **
0	0	0	Doors closing.

** = Buzzer Table - 1

DISDOT1N Recommended Panel Cutout



DISDOT1N Recommended Lens Dimensions

